

I'll Always Know Where To Find You

Kevin Purcell, Victor Kazan

ROBIN

Oh, Mary! My sweet, darling Mary...

How do I try to say goodbye
To someone who means as much to me as you?
What can I say when I walk away
To comfort you - make you smile
Not make you cry?

Sweet lass in the cold light of morning
Forgive me if I don't say goodbye
But you'll forever be the only girl for me
And I shall love you till the day I die

MARY

Oh, Robin! I'm trying so very hard to stay strong.

Though we can't see past tomorrow
We need to remember
There'll come a time for us
To share another September

ROBIN

If only now we could choose

MARY, ROBIN

Win all or lose

MARY

But you have to go

ROBIN

There's no way

MARY

I know

Robin!

ROBIN

That I can stay.

ROBIN

I'll always know where to find you
And when the time is right I'll come home
It might be a year until I'm here again;
But no matter when - until then
Though we're apart - wherever I roam
You'll always be with me in my heart

And so will you, Ben.

CASTLE GILLIAN

A N I R I S H T A L E

THE MUSICAL

How to Participate:

Choose Your Song – Listen to the previews on our website.

Download Materials – Get the instrumental track from our website.

Sing & Record – Film your performance in your unique style.

Post a 90-second Clip – Upload to TikTok, Instagram, YouTube Shorts, or Facebook using #SingCastleGillian and tag @CastleGillianAnIrishTale.

Want to Stand Out? Upload your full performance on Youtube, submit the link via our website—www.castlegillian.com/singcastlegillian, and be in the running to feature on the Official Sing Castle Castle Album!

Stay Tuned! – Winners and runners-up will be announced on our website and socials.

Prizes & Recognition:

Winners – Featured on our website & socials.

Runners-Up – Highlighted on social media.

Outstanding Performers – Aspiring professionals stand a shot to be on the Sing Castle Gillian Album. Be seen and heard, by a panel of amazing judges.

Kevin Purcell – *Multi award-winning conductor and musical director.*

Sue Drew – *GM, Creative & Acquisitions, Kobalt Music.*

Michael A. Kerker – *Director of Musical Theatre, American Society of Composers, Authors and Publishers (ASCAP).*

Rendered Scenes, Concept Art & Costume Designs



I'll Always Know Where To Find You

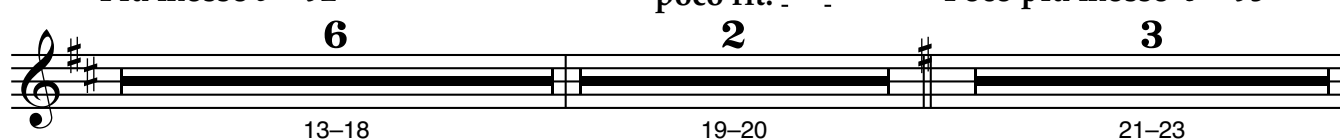
"I'll Always Know
Where To Find You"

Orchestration:

Ballad ♩ = 88



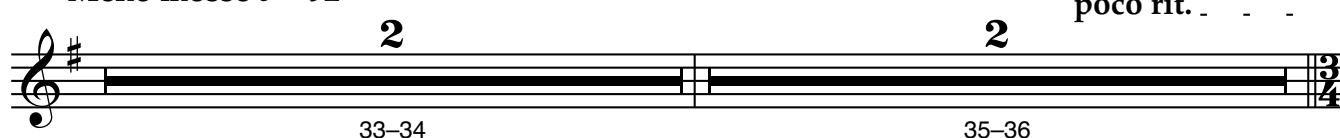
Più mosso ♩ = 92



poco accel. ♩ = 106



Meno mosso ♩ = 92



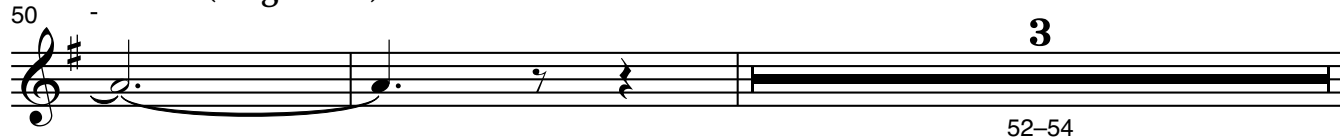
♩ = 150 (Easy in 1)



Poco Più mosso ♩ = 154



♩ = 166 (Bright in 1)



55

win all or lose, but you have to go.

Stage action: Mary rushes off stage

mf rit. molto rit.

65

I know.

Meno mosso ♩ = 98 Più mosso ♩ = 102 poco accel.

2 **2** **2**

68-69 70-71 72-73

♩ = 108 accel. rit.

5 **4**

74-78 80-83

Meno mosso ♩ = 92 molto rit.

2

85-86