

Why Me, St. Jude?

Kevin Purcell, Victor Kazan

*Saints preserve us! Why is it you keep sending me
all your lost causes?*

Why me, St. Jude, why me?
Why must you always choose me?
I'm not a wealthy girl
I can scarce afford to work for free
So why do I always agree
To slave away for poor souls who can't pay?
Will you forever be
Making me take on all your lost causes?

Some folk say I've a heart of gold
And that may well be true
But what good is that if I'm broke when I'm old?
I could end up hungry, thin and cold
Maybe I'm strange, but I'll never change
I s'pose that's why you know you can trust me
To always do as I'm told
And never turn away your lost causes

Well I admit, St. Jude
This Highlander's a cut above the rest
Of them all I like him best
Even though he's poorly dressed

Yes he's quite different from the horde
And handsome in his own way
Is his racehorse my reward
Or just better odds for you and the Lord?

Of course if I was training his horse
There's no chance that I'll ever be bored
So between you and me could it be
You've at last sent me one of your best... horses

But he's not nearly as handsome as you.

CASTLE GILLIAN

A N I R I S H T A L E

THE MUSICAL

How to Participate:

Choose Your Song – Listen to the previews on our website.

Download Materials – Get the instrumental track from our website.

Sing & Record – Film your performance in your unique style.

Post a 90-second Clip – Upload to TikTok, Instagram, YouTube Shorts, or Facebook using #SingCastleGillian and tag @CastleGillianAnIrishTale.

Want to Stand Out? Upload your full performance on Youtube, submit the link via our website—www.castlegillian.com/singcastlegillian, and be in the running to feature on the Official Sing Castle Castle Album!

Stay Tuned! – Winners and runners-up will be announced on our website and socials.

Prizes & Recognition:

Winners – Featured on our website & socials.

Runners-Up – Highlighted on social media.

Outstanding Performers – Aspiring professionals stand a shot to be on the Sing Castle Gillian Album. Be seen and heard, by a panel of amazing judges.

Kevin Purcell – Multi award-winning conductor and musical director.

Sue Drew – GM, Creative & Acquisitions, Kobalt Music.

Michael A. Kerker – Director of Musical Theatre, American Society of Composers, Authors and Publishers (ASCAP).

Rendered Scenes, Concept Art & Costume Designs



"Why Me, St. Jude?"

Why Me, St. Jude?

[r 23/3/2025]

Mary: Saints preserve us, [GO] why is it you keep sending me all your lost causes?

Bright in 1 ♩ = 154 *mf* *f*

1 Why me, St. Jude, why me? 5 Why must you al -

ways choose me? 10 I'm not a weal - thy girl;

15 I can scarce af - ford to work for free. So why do

20 I al-ways a - gree to slave a - way for poor souls who can't pay?— Will

25 you for - e - ver be ma-king me take on all your lost cau - ses? Some Folks

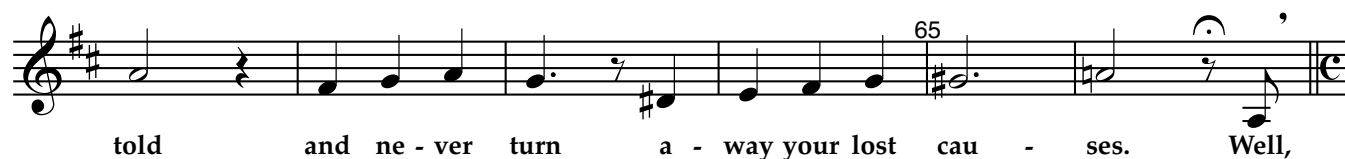
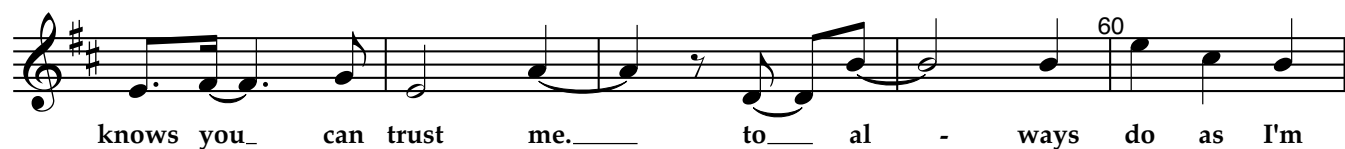
30

35 *mf* say I've a heart of gold 40 and, that may well be true;

45 but what good is that if I'm broke when I'm old I could end up hun - gry,

50 thin and cold. 55 May-be I'm strange but I'll ne-ver change I s'pose that's why you

V.S.



Moderato ♩ = 120

Slowly ♩ = 74



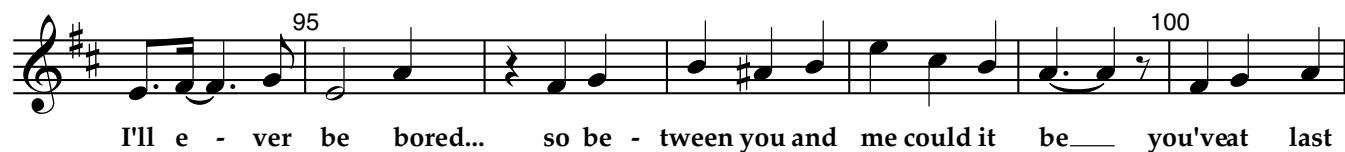
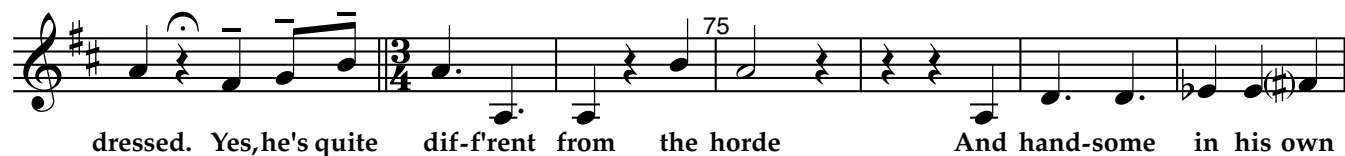
Più mosso ♩ = 78

Più mosso ♩ = 84

poco rit.

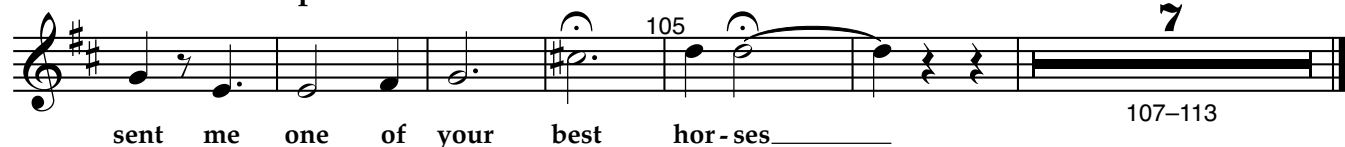


Bright in 1 ♩ = 160



poco rall.

Bright in 1 ♩ = 160



107-113